



basic education

Department:
Basic Education
REPUBLIC OF SOUTH AFRICA

**NATIONAL
SENIOR CERTIFICATE**

GRADE 12

MATHEMATICAL LITERACY P2

ADDENDUM

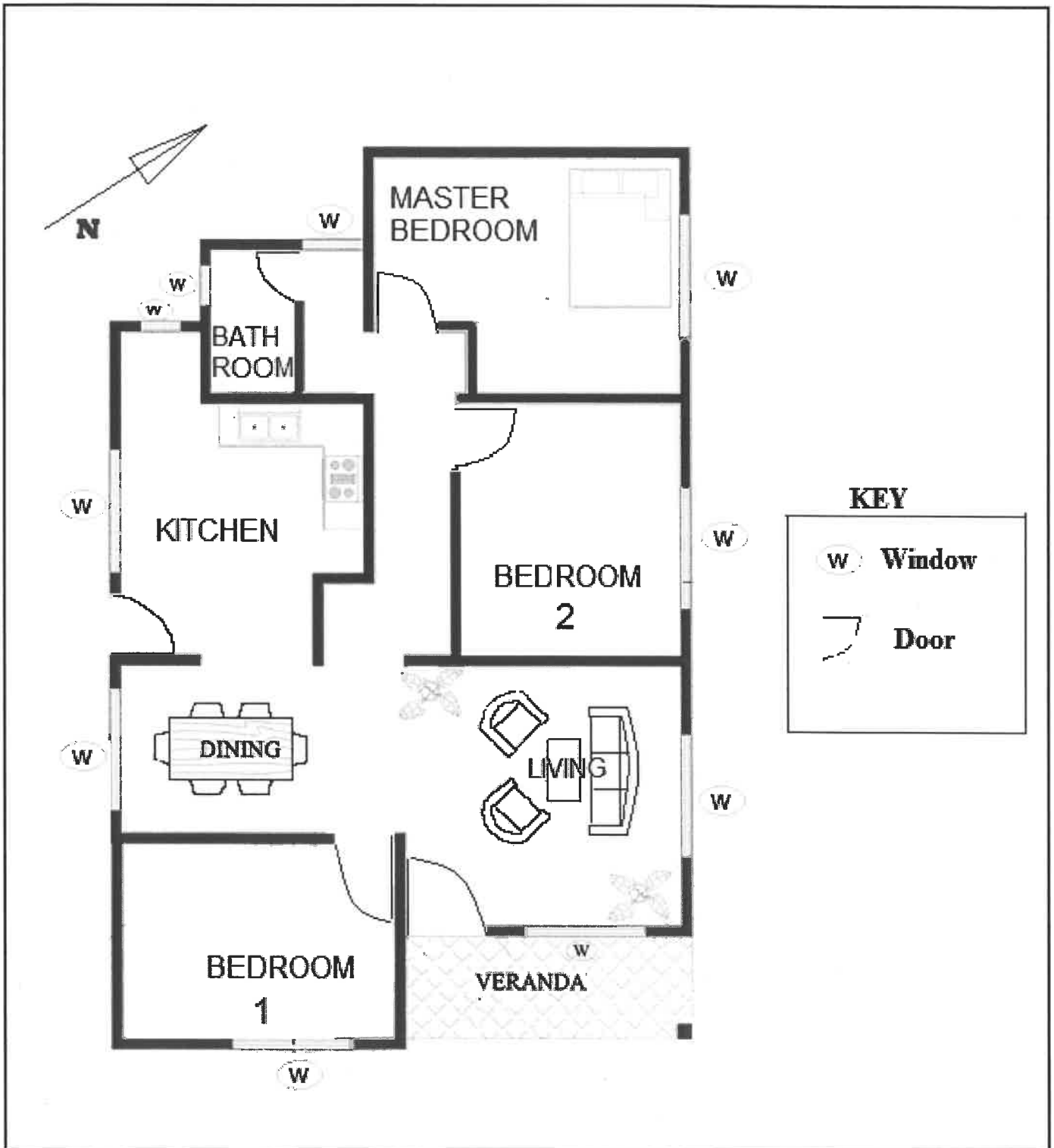
NOVEMBER 2021

This addendum consists of 5 pages with 4 annexures.

ANNEXURE A

QUESTION 2

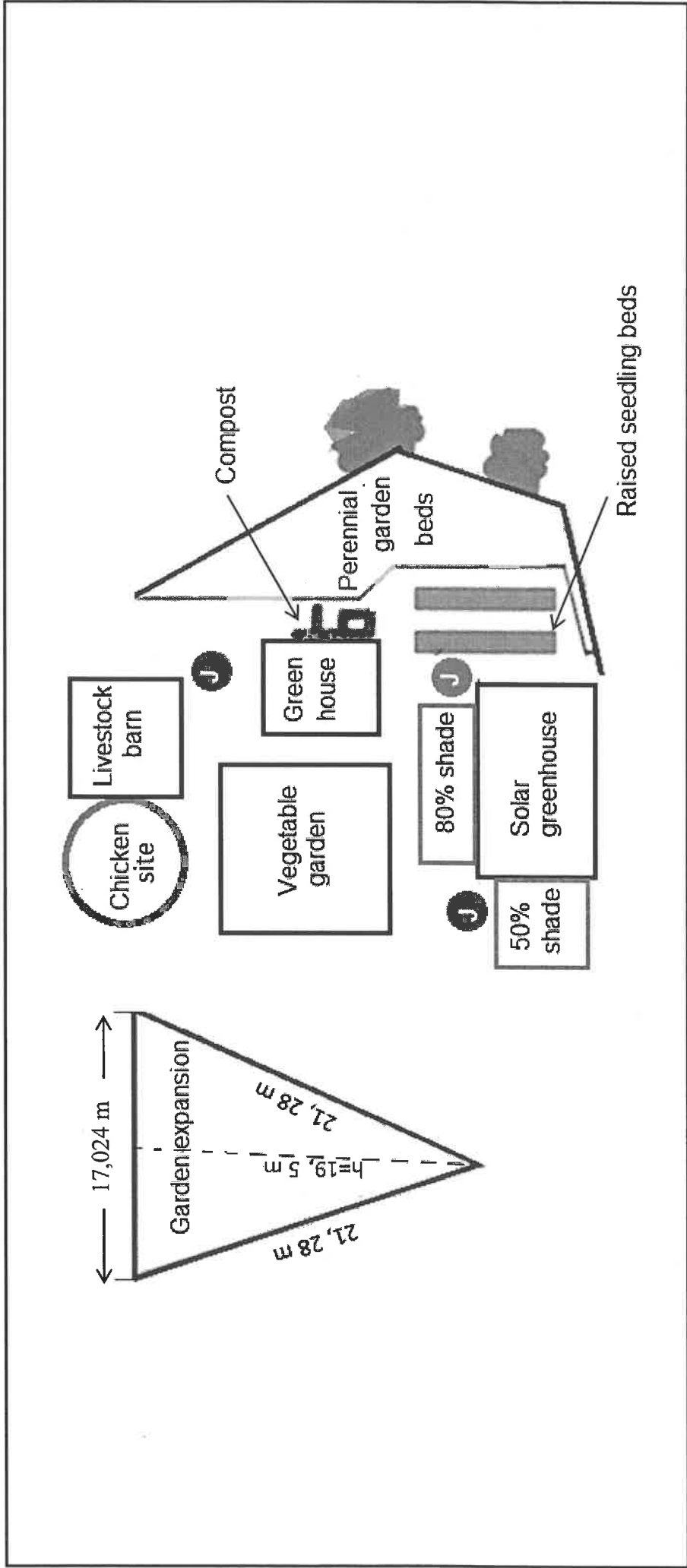
FLOOR PLAN OF A HOUSE



ANNEXURE B

QUESTION 4.1


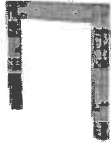

LAYOUT PLAN OF THE FARMYARD



ANNEXURE C

QUESTION 4.3.3

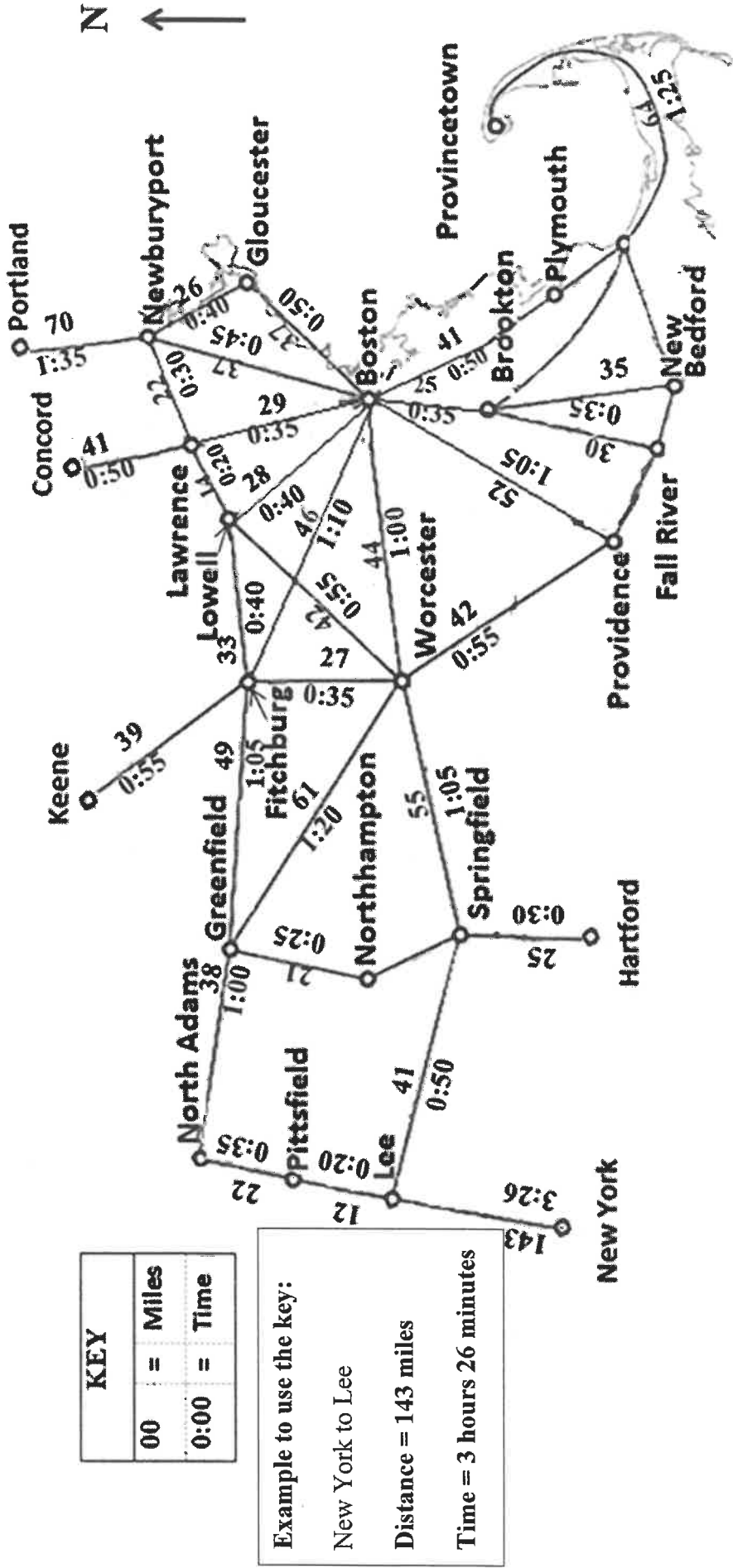
DIAGRAMS AND SOME ASSEMBLY INSTRUCTIONS FOR THE CHAIR

COLUMN A	COLUMN B
<p>(a)</p> 	<p>(i) Attach to the stretcher to the front legs as shown, using glue and screws.</p>
<p>(b)</p> 	<p>(ii) Attach the front legs to the back legs with the stretchers.</p>
<p>(c)</p> 	<p>(iii) Secure the back slats using glue and screws. Position the back stretcher on the legs as shown, then secure using glue and screws.</p>

ANNEXURE D

QUESTION 5.1

PARTIAL MAP OF THE UNITED STATES OF AMERICA SHOWING DISTANCES (IN MILES) AND TIME (IN HOURS AND MINUTES) TAKEN BETWEEN VARIOUS CITIES



[Source: Afp-ev.blogspot.com]